

ab126434 - EGFR (pS1046) Human ELISA Kit

Instructions for Use

For the quantitative measurement of human phosphorylated EGFR (Ser 1046) concentrations in cell lysates.

This product is for research use only and is not intended for diagnostic use.

Table of Contents

1.	Introduction	2
2.	Assay Summary	3
3.	Kit Contents	4
4.	Storage and Handling	5
5.	Additional Materials Required	6
6.	Preparation of Samples	7
7.	Preparation of Reagents	8
8.	Assay Method	10
9.	Data Analysis	12
10.	Troubleshooting	15

1. Introduction

ab126434 is a very rapid, convenient and sensitive assay kit that can monitor the activation or function of important biological pathways in cell lysates. By determining phosphorylated EGFR protein in your experimental model system, you can verify pathway activation in your cell lysates. You can simultaneously measure numerous different cell lysates without spending excess time and effort in performing a Western Blot analysis.

This Sandwich ELISA kit is an in vitro enzyme-linked immunosorbent assay for the measurement of phospho-EGFR (Ser 1046) in human cell lysates. An anti-EGFR antibody has been coated onto a 96-well plate. Samples are pipetted into the wells and phosphorylated and unphosphorylated EGFR present in a sample is bound to the wells by the immobilized antibody. The wells are washed and anti-phospho-EGFR (Ser 1046) antibodies are used to detect phosphorylated EGFR. After washing away unbound antibody, HRP-conjugated anti-Rabbit IgG (secondary antibody) is pipetted to the wells. The wells are again washed, a TMB substrate solution is added to the wells and color develops in proportion to the amount of EGFR bound. The Stop Solution changes the color from blue to yellow, and the intensity of the color is measured at 450 nm.

2. Assay Summary

Prepare all reagents, samples and standards as instructed.



Add 100 μ l sample or positive control to each well. Incubate 2.5 hours at room temperature or overnight at 4°C.



Add 100 μ l prepared primary antibody to each well. Incubate 1.5 hours at room temperature.



Add 100 μ l prepared secondary antibody solution. Incubate 1 hour at room temperature.



Add 100 μ l TMB One-Step Substrate Reagent to each well. Incubate 30 minutes at room temperature.



Add 50 μ l Stop Solution to each well. Read at 450 nm immediately.

3. Kit Contents

- EGFR Microplate (Item A): 96 wells (12 strips x 8 wells) coated with monoclonal anti-EGFR.
- Wash Buffer Concentrate (20x) (Item B): 25 ml of 20x concentrated solution.
- Anti-phospho-EGFR (Ser 1046) (Item C): 2 vials of 2,000x rabbit anti-human, mouse and rat EGFR (Ser 1046).
- HRP-conjugated Anti-rabbit IgG (Item D-1), 25 μ l HRP-conjugated Anti-rabbit IgG.
- Assay Diluent (Item E): 15 ml of 5x concentrated buffer. For diluting cell lysate sample and antibody (Item C and D).
- TMB One-Step Substrate Reagent (Item H): 12 ml of 3,3',5,5'-tetramethylbenzidine (TMB) in buffered solution.
- Stop Solution (Item I): 8 ml of 0.2 M sulfuric acid.
- Cell Lysate Buffer (Item J): 5 ml 2x cell lysis buffer (not including protease and phosphatase inhibitors).
- Positive Control (Item K): 1 vial of lyophilized powder from A431 cell lysate.

4. Storage and Handling

Upon receipt, the kit should be stored at -20°C . After initial use, Wash Buffer Concentrate (Item B), HRP-conjugated Anti-rabbit IgG (Item D-1), Assay Diluent (Item E), TMB One-Step Substrate Reagent (Item H), Stop Solution (Item I) and Cell Lysate Buffer (Item J) should be stored at 4°C to avoid repeated freeze-thaw cycles. Anti-phospho-EGFR (Ser 1046) (Item C) should be stored at -20°C . Return unused wells to the pouch containing desiccant pack, reseal along entire edge and store at -20°C . Reconstituted Positive Control (Item K) should be stored at -70°C .

5. Additional Materials Required

- Microplate reader capable of measuring absorbance at 450 nm.
- Protease and Phosphatase inhibitors.
- Shaker.
- Precision pipettes to deliver 2 μ l to 1 ml volumes.
- Adjustable 1-25 ml pipettes for reagent preparation.
- 100 ml and 1 L graduated cylinders.
- Distilled or deionized water.
- Tubes to prepare sample dilutions.

6. Preparation of Samples

Cell lysates - Rinse cells with PBS, making sure to remove any remaining PBS before adding the Cell Lysate Buffer. Solubilize cells at 4×10^7 cells/ml in 1x Cell Lysate Buffer (we recommend adding protease and phosphatase inhibitors to Cell Lysate Buffer prior to sample preparation). Pipette up and down to resuspend and incubate the lysates with shaking at 2 - 8°C for 30 minutes. Microcentrifuge at 13,000 rpm for 10 minutes at 2 - 8°C, and transfer the supernates into a clean test tube. Lysates should be used immediately or aliquoted and stored at -70°C. Avoid repeated freeze-thaw cycles. Thawed lysates should be kept on ice prior to use.

For the initial experiment, we recommend to do a serial dilution testing such as 10-fold and 100-fold dilution for your cell lysates with 1x Assay Diluent (Item E) before use.

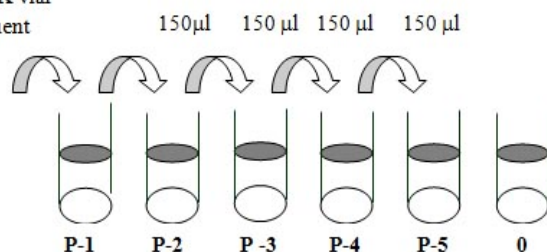
Note: The fold dilution of sample used depends on the abundance of phosphorylated proteins and should be determined empirically. More of the sample can be used if signals are too weak. If signals are too strong, the sample can be diluted further.

Cell Lysate Buffer should be diluted 2-fold with deionized or distilled water before use (recommend to add protease and phosphatase inhibitors).

7. Preparation of Reagents

1. Bring all reagents and samples to room temperature (18 - 25°C) before use.
2. Item E, Assay Diluent should be diluted 5-fold with deionized or distilled water before use.
3. Preparation of Positive Control: Add 800 μl 1x Assay Diluent (Item E, Assay Diluent should be diluted 5-fold with deionized or distilled water before use) into Item K vial to prepare a Positive Control (P-1) Solution (See i. Positive Control of Data Analysis for a typical result). Dissolve the powder thoroughly by a gentle mix. Pipette 300 μl 1x Assay Diluent into each tube. Use the Positive Control (1) to produce a dilution series (shown below). Mix each tube thoroughly before the next transfer. 1x Assay Diluent serves as the background.

Positive Control, Item K vial
+ 800 μl 1x Assay Diluent



4. If the Wash Concentrate (20x) (Item B) contains visible crystals, warm to room temperature and mix gently until dissolved. Dilute 20 ml of Wash Buffer Concentrate into deionized or distilled water to yield 400 ml of 1x Wash Buffer.
5. Briefly spin the anti-phospho-EGFR (Ser 1046) (Item C) before use. Pipette up and down to mix gently. The anti-phospho-EGFR (Ser 1046) should be diluted with 100 μ l of 1X Assay Diluent into the vial to prepare a phospho detection antibody concentrate. Pipette up and down to mix gently (the concentrate can be stored at 4°C for 5 days or at -80°C for one month). The concentrate should then be diluted 55-fold with 1X Assay Diluent and used in step 4 of the Assay Method.
6. Briefly spin the HRP-conjugated anti-rabbit IgG (Item D-1) before use. Pipette up and down to mix gently. HRP-conjugated anti-rabbit IgG concentrate should be diluted 1,000-fold with 1x Assay Diluent.

For example: Briefly spin the vial (Item D) and pipette up and down to mix gently. Add 5 μ l of HRP-conjugated anti-rabbit IgG concentrate into a tube with 5 ml 1x Assay Diluent to prepare a 1,000-fold diluted HRP-conjugated anti-rabbit IgG solution.

7. Cell Lysate Buffer should be diluted 2-fold with deionized or distilled water before use (recommend to add protease and phosphatase inhibitors).

8. Assay Method

1. Bring all reagents to room temperature (18 - 25°C) before use. It is recommended that all samples or Positive Control should be run at least in duplicate.
2. Add 100 µl of each sample or positive control into appropriate wells. Cover well with plate holder and incubate for 2.5 hours at room temperature or overnight at 4°C with shaking.
3. Discard the solution and wash 4 times with 1x Wash Solution. Wash by filling each well with Wash Buffer (300 µl) using a multi-channel pipette or autowasher. Complete removal of liquid at each step is essential to good performance. After the last wash, remove any remaining Wash Buffer by aspirating or decanting. Invert the plate and blot it against clean paper towels.
4. Add 100 µl of prepared 1x primary antibody Anti-phospho-EGFR (Ser 1046) (Preparation of Reagents step 5) to each well. Incubate for 1.5 hours at room temperature with shaking.

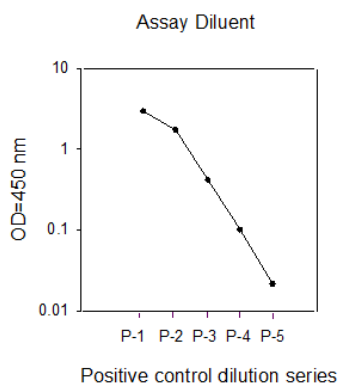
5. Discard the solution. Repeat the wash as in step 3.
6. Add 100 μ l of prepared 1x secondary antibody solution (see Preparation of Reagents step 6) to each well. Incubate for 1 hour at room temperature with shaking.
7. Discard the solution. Repeat the wash as in step 3.
8. Add 100 μ l of TMB One-Step Substrate Reagent (Item H) to each well. Incubate for 30 minutes at room temperature in the dark with shaking.
9. Add 50 μ l of Stop Solution (Item I) to each well. Read at 450 nm immediately.

9. Data Analysis

ELISA data analysis: Average the duplicate readings for each sample or positive then subtract the average blank optical density.

i. Positive Control

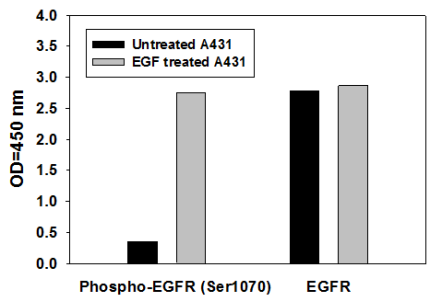
A431 cells were treated with recombinant human EGF at 37°C for 20 min. Solubilize cells at 4×10^7 cells/ml in Cell Lysate Buffer. Serial dilutions of lysates were analyzed in this ELISA. Please see step 3 of Preparation of Reagents for detail.



ii. Recombinant Human EGF Stimulation of A431 Cell Lines

A431 cells were treated or untreated with 100 ng/ml recombinant human EGF for 10 min. Cell lysates were analyzed using this phosphoELISA and Western Blot.

a) ELISA



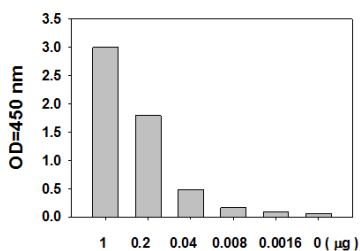
b) Western Blot Analysis



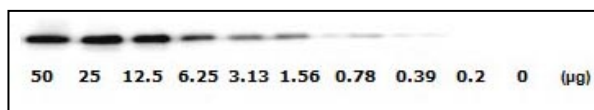
iii. Sensitivity

The A431 cells were treated with 100 ng/ml recombinant human EGF for 20 minutes to induce phosphorylation of EGF R. Serial dilutions of lysates were analyzed in this ELISA and by Western blot. Immunoblots were incubated with anti-phospho-EGFR (Ser 1046).

a) ELISA



b) Western Blot Analysis



10. Troubleshooting

Problem	Cause	Solution
Sample signals	Too low: Sample concentration is too low.	Increasing sample concentration.
	Too high: Sample concentration is too high.	Reduce sample concentration.
Large CV	Inaccurate pipetting	Check pipettes
High background	Plate is insufficiently washed.	Review the manual for proper washing. If using an automated plate washer, check that all ports are unobstructed.
	Contaminated wash buffer.	Make fresh wash buffer.

Positive Control: Low signal	Improper storage of the ELISA kit.	Upon receipt, the kit should be stored at -20°C. Store the positive control at -70°C after reconstitution.
	Stop solution	Stop solution should be added to each well before measurement and read OD immediately.
	Improper primary or secondary antibody dilution.	Ensure correct dilution.

UK, EU and ROW

Email: technical@abcam.com

Tel: +44 (0)1223 696000

www.abcam.com

US, Canada and Latin America

Email: us.technical@abcam.com

Tel: 888-77-ABCAM (22226)

www.abcam.com

China and Asia Pacific

Email: hk.technical@abcam.com

Tel: 108008523689 (中國聯通)

www.abcam.cn

Japan

Email: technical@abcam.co.jp

Tel: +81-(0)3-6231-0940

www.abcam.co.jp